

NA Update

USDA Forest Service

Northeastern Area

State and Private Forestry

NAASF STATE LAND MANAGEMENT COMMITTEE

Annual Meeting

TUESDAY, MAY 19, 2009



Overview

- **S&PF Redesign**
- **American Recovery and Reinvestment Act of 2009 (ARRA)**
- **FY 2009 Funding**
- **Unified Program of Work**
- **FY 2009 NA Strategic Business Plan**

S&PF Redesign with FRPC

- **Finalized and approved by NAASF:**
 - **NAASF Guide for Statewide Forest Resource Assessments and Strategies**
 - **NAASF Suggested Framework for Statewide Forest Resource Assessments**
- **State Forest Resource Strategy Guidance drafted**
 - **Team of NA specialists and state forestry agency staff – planners/ program coordinators - to be finalized for NAASF approval, summer 2009.**

S&PF Redesign, cont.

- **National Data Strategy Team**
 - Sherri Wormstead and Tom Luther, as program and geospatial experts, respectively.
- **National S&PF Performance Measure Development Team**
 - Involvement and consolidated an NA-wide response [Ian coordinated an NAASF response] to proposed measures, with input from Area staff specialists and NA leadership.

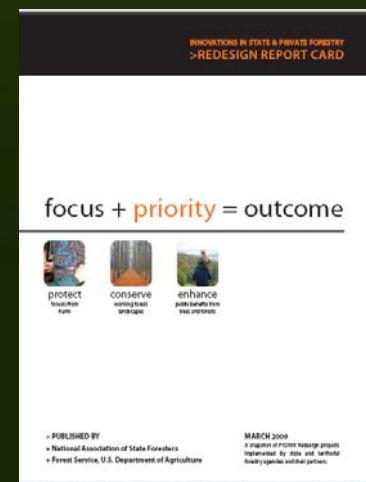
S&PF Redesign, cont.

- **DRAFT Checklist for review of State Forest Resource Assessments and Strategies developed**
 - Intended for national adoption. Recently shared with S&PF leadership
- **Geospatial Resources specific to NA - Team of NA and state program & GIS specialists, NRS and Eastern Region.**
 - Urban Geospatial Resource Guide finalized in March 2009
 - Fire Risk Assessment Model developed, with analysis to be initially run in May 2009.
 - Community Wildfire Protection Plan map drafted
 - Cooperative Weed Management Area map drafted

S&PF Redesign, cont.

■ National 2008 S&PF Redesign Report Card

- Now on the NASF Website with a link from the national Redesign Website:
<http://www.fs.fed.us/spf/redesign/index.shtml>



■ On-line form

- Reviewed and finalized with input from two state planners, NA Office of Communications and NRS communications in support of the Northern Forest Futures Project.

S&PF Redesign Competitive Funding (FY 09)

Evaluation Criteria:

- **Priority Issues or Landscapes:** clearly define and identify priority issues or landscapes being addressed; indicate linkage to State and/or Area Strategic Plans
- **Measurable Results/ Significant Outcomes:** provide clear statement of purpose; influencing positive change on the ground and in the policies that guide conservation, protection and enhancement of trees and forests
- **Capacity for Replication:** results in skills and capabilities extending beyond the life and scope of the project itself (demonstrates and/or documents transferability to other states or partners)
- **Partnerships and Collaboration:** show how project demonstrates leadership in cross-boundary cooperation (multi-state, metropolitan and multi-community, multi-landowner) in scope or delivery and influence; describes the specific contributions of all partners and the critical role of those partners in leveraging outcomes

American Recovery and Reinvestment Act of 2009 - ARRA

- **February 17, 2009** - American Recovery and Reinvestment Act of 2009—also known as the “Stimulus Bill”—was signed into law.
- **May 7, 2009** - FS Chief announced that Secretary of Ag, Tom Vilsack announced additional \$223.6 million of Forest Service projects to be funded by the American Recovery and Reinvestment Act (ARRA).
 - **Hazardous fuels reduction projects** in over 26 states on Federal, State, private, and tribal lands.
 - Public FS internet site for ARRA projects:
<<http://www.fs.fed.us/arra/arra-fs-projects-20090507.pdf>>
 - DE, IN and MA received funds.
- **May 14, 2009** – Ag. Secretary Vilsack announced today projects funded by the American Recovery and Reinvestment Act (ARRA) for **invasive species projects**. In total, there are 19 projects, funded at over \$38 million, in 14 states. – MA, MI, OH, RI

FY 2009 Funding

- **May 14:** NA Fiscal Year 2009 Financial Advice to the States, for the Cooperative Programs of the State and Private Forestry. <http://www.na.fs.fed.us/fap/fap.shtm>
- **July 1:** Applications for Federal Financial Assistance due to NA.
- **More information:** Forest Stewardship and Urban & Community Forestry, forthcoming.

NA Unified Program of Work

Purpose:

Guide how we accomplish our work in NA. Clarification and refinement of internal processes affecting staff and partners.

Addresses Organizational Issues:

- Roles and responsibilities
- NA strategic business management process
- NA strategic plan and business plan,
- National program direction and budget,
- Grants management,
- Stakeholder/partner relations and commitments, the
- Budget allocation decision process

NA Organization

Realignment of NA Forest Management staff

- **Forest Legacy Program and Urban & Community Forestry assigned to Billy Terry (Fire)**
- **Martina Barnes has joined the Office of Knowledge Management (with Sherri Wormstead on the Sustainability and Planning team)**
- **Matt Arnn to the Morgantown Field Office.**

FY 2009 NA Strategic Business Plan

[first 20% of NA focus]

Statewide Assessments and Strategies:

Establish guidance and provide support to states during development of their statewide forest resource assessments and strategies, with NAASF committees, and in coordination with their competitive resource allocation (initiative) process of S&PF Redesign.

Stewardship Project:

Develop and implement Stewardship Project to reform stewardship delivery in coordination with partners/cooperators.

Watershed Strategy:

Develop a comprehensive watershed strategy for the Northeastern Area
1) partnership based; 2) identifies priority watersheds;
3) provides integrated S&PF program solutions to critical conservation issues within these watersheds.

FY 2009 NA Strategic Business Plan

[first 20% of NA focus]

EAB Comprehensive Strategy:

Develop comprehensive integrated program strategy to guide investments and actions that help reduce the adverse effects from EAB across the NA landscape. Scope - advice to communities, characterizing potential impacts, gene conservation needs, advice to landowners, public outreach, treatment method development, inter-agency control support

Urban Forest Health Information Center:

Establish/ Implement a sustainable Urban Forest Health Monitoring effort - links urban forest inventory & pest detection; provides ability to characterize urban forest resources & urban forest health issues at multiple scales.

Climate Change:

Advance NA's understanding and role in climate change and ecosystem services through the suite of State and Private Forestry programs and emphasis areas such as Wood to Energy.

Fire Risk and CWPP development:

Integrate Community Wildfire Protection Plans with Forest Stewardship plan development, urban forest planning, Urban Forest Health Monitoring.

Contact:

**USDA Forest Service
Northeastern Area
State and Private Forestry
11 Campus Blvd, Suite 200
Newtown Square, PA 19073**

Or visit:

www.na.fs.fed.us

